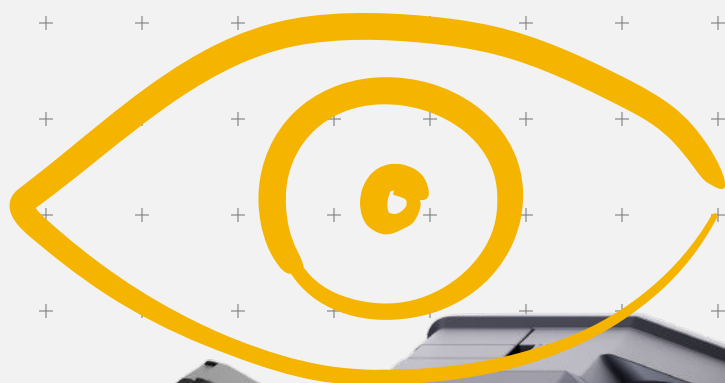


# TASKalfa MZ4000i: The future is here!

The TASKalfa MZ4000i is a truly reliable A3 monochrome MFPs for small to medium sized workgroups in any businesses or professional workplaces where high productivity, high reliability and optimal investments are required.



## **TASKalfa MZ4000i**



**Up to 40 pages per minute**

**Black and white printer**

**Standard 1,100-sheet capacity**

**Productive scanning features**

**Cloud compatibility**



# TASKalfa MZ4000i

## GENERAL

**Operation panel:** 256.5 mm (10.1 inch) full-colour touch panel display, speaker for job notification, 15° - 90° swivel mounted

**Engine speed:** Up to 40 pages A4 per minute, up to 21 pages A3 per minute

Duplex print speed: 36 page per minute, A4

Duplex copy speed: 40 page per minute, A4

**Resolution:** 1200 x 1200 dpi (at reduced speed), 600 x 600 dpi (scan/copy)

**Warm-up time:** Approx. 18 seconds or less

**Time to first print:** Approx. 4.2 seconds or less

**Time to first copy:** Approx. 5.6 seconds or less (DP7140 installed), approx. 3.6 seconds or less (Platen)

**CPU:** PANTHER ARM A53 1.6GHz

**Memory:** Standard 4GB + 32GB SSD, 320GB or 1TB HDD optional

**Standard interface:** USB 3.0 (Super-Speed USB), 4 x USB Host Interface, Gigabit Ethernet (10BaseT/100BaseTX/1000BaseT, IPv6, IPv4, IPSec, 802.3az support), optional Wi-Fi (IEEE 802.11b/g/n), 2 eUIO slots for optional internal print server or for optional fax system, slot for optional Wireless LAN, Slot for optional SD Card, NFC tag

**Dimensions (W x D x H):** 594 x 696 x 683 mm

**Weight:** Approx. 58 kg

**Power source:** AC 220 ~ 240 V, 50/60 Hz

**Power consumption:** Printing: 600 W, copying: 600 W, low power mode: 70 W, ready mode: 100 W, sleep-mode: 0.5 W

**Noise:** Sleep mode: Immeasurably low, ready mode: Immeasurably low, printing: 48.7 dB (A) LpA

**Safety standards:** TÜV/GS, CE

## PAPER HANDLING

All paper capacities quoted are based on paper thickness of max. 0.11 mm. Please use paper recommended by Kyocera under normal environmental conditions.

**Input capacity:** Multi-purpose tray: 100 sheets, 45 – 256 g/m<sup>2</sup> (A4/Letter or smaller), 52 – 163 g/m<sup>2</sup> (A4/Letter or larger), standard universal paper cassette: 2 x 500 sheet, 60 – 163 g/m<sup>2</sup>, max. input capacity with options: 4,100 sheets A4

**Duplex:** Standard, 60 – 163 g/m<sup>2</sup> A3 – A5R

**Output capacity:** Standard 250 sheets face-down

## PRINT FUNCTIONS

**Controller language:** Prescribe

**Emulations:** PCL6 (PCL5c / PCL-XL), KPDL3 (PostScript 3 compatible), PDF Direct Print, XPS Direct Print and OpenXPS

**Operating systems:** All current Windows operating systems, MAC OS X Version 10.9 or higher, Linux as well as other operating systems on request

**Fonts/barcodes:** 93 outline fonts (PCL), 136 fonts (KPDL 3), 4 fonts (Calibri), 4 fonts (Cambria), 1 Bitmap font, 45 types of one-dimensional barcodes, 1 type of two-dimensional barcode (PDF417)

**Print features:** Print features: Encrypted PDF Direct Print, IPP printing, e-mail printing, WSD print, secure printing via SSL, IPSec, SNMPv3, quick copy, proof and hold, private print, job storage and job management functionality

**Mobile printing support:** Mobile printing support: AirPrint, Mopria, Google Cloud Print compliant, NFC, Direct Wi-Fi (optional), MyPanel and KYOCERA Mobile Print app for iOS and Android

## COPY FUNCTIONS

**Max. original size:** A3/Ledger

**Continuous copying:** 1 – 9999

**Zoom range:** 25–400%, in 1% steps

**Preset magnification ratios:** 5 Reductions / 5 enlargements

**Exposure mode:** Auto, manual: 17 steps

**Image adjustments:** Text + photo, photo, text, diagram/map

**Features:** Scan-once-copy-many, electronic sort, 2in1, 4in1, image repeat, page numbering, cover mode, booklet copy, interrupt copy, form overlay, margin shift, auto cassette change, skip blank page, ID copy, Original skew correction, Multipage form mode (when DP-7160/7170 installed only)

## SCAN FUNCTIONS

**Functionality:** Scan-to-email, scan-to-FTP, scan-to-SMB 3.0, scan-to-USB host, scan-to-box, network TWAIN, WSD scan (WIA Driver Network)

**Scan speed:** 200 ipm (300 dpi, A4, duplex, b/w, with DP-7160/DP-7170)

**Scan resolution:** 600dpi x 600dpi, 400dpi x 400dpi, 200dpi x 400dpi, 300dpi x 300dpi, 200dpi x 200dpi, 200dpi x 100dpi, 1200dpi x 1200dpi (only TWAIN driver and WIA driver), 256 greyscales per colour

**Max. scan size:** A3, Ledger

**Original recognition:** Text, photo, text + photo, Light Text / Fine Line, optimised for OCR

**File types:** TIFF, PDF, PDF/A, JPEG, Open XPS, Encrypted PDF, High compression PDF, PDF/A-1a/b, PDF/A-2a/b/u, Searchable PDF(Optional), MS Office file (Option)

## FAX FUNCTIONS

**Compatibility:** ITU -T Super G3

**Modem speed:** Max. 33.6 kbps

**Transmission speed:** Less than 3 seconds (JBIG)

**Scanning speed:** 2.0 seconds or less

**Address book:** 2000 entries

**Scanning density:** Normal: 8 dot/mm x 3.85 line/mm (200 x 100 dpi), Fine: 8 dot/mm x 7.7 line/mm (200 x 200 dpi), Superfine: 8 dot/mm x 15.4 line/mm (200 x 400 dpi), Ultrafine: 16 dot/mm x 15.4 line/mm (400 x 400 dpi), Halftone: 256 grey scales

**Maximum original size:** A3, Ledger, Banner: 1600mm

**Compression method:** JBIG, MMR, MR, MH

**Features:** Network faxing, rotate transmission, rotate reception, encrypted transmission and reception, duplex fax reception, memory reception, mailbox, remote diagnostics, polling transmission and reception, broadcast, Optional Internet-fax, dual fax with second fax system 12

## CONSUMABLES

**Toner Kit:** TK-7235K, toner black for 35,000 pages A4

**Staple:** SH-10, 3 x 5,000 staples, for DF-7120, SH-12, 3 x 5,000 staples, for DF-791

**Options:** Fax System 12, Internet Fax Kit (A) AC, Scan Extension Kit (A) AC, Scan to searchable PDF solution (embedded OCR), convert to PDF or MS Office (docx, xlsx, pptx)

### Paper handling:

DP-7140 Document processor: (Reversing), 50 sheets, 45–160 g/m<sup>2</sup> (simplex), 50–120 g/m<sup>2</sup> (duplex), A5R – A3, banner up to 1,900 mm

DP-7150 Document processor: (Reversing), 140 sheets, 35–160 g/m<sup>2</sup> (simplex), 50–120 g/m<sup>2</sup> (duplex), A6R–A3, Banner up to 1,900 mm

DP-7160 Document processor: (one-path duplex scanning), 320 sheets at 50 - 80 g/m<sup>2</sup>, 35–220 g/m<sup>2</sup> (simplex), 50–220 g/m<sup>2</sup> (duplex), A6R–A3, Banner up to 1,900 mm

DP-7170 Document processor: (one-path duplex scanning with ultrasonic sensor), 320 sheets at 50 - 80 g/m<sup>2</sup>, 35–220 g/m<sup>2</sup> (simplex), 50–220 g/m<sup>2</sup> (duplex), A6R–A3, Banner up to 1,900 mm

PF-791: 500 sheets x 2 desks, 60–256 g/m<sup>2</sup>, A5R–A3

PF-810: 3,000 sheets A4, 60–256 g/m<sup>2</sup>, A4, B5, Letter

DF-791 Document Finisher + AK740, Main tray: 3,000 sheets A4, 60–256 g/m<sup>2</sup>, B5R–A3, Stapling up to 65 sheets A4 or 30 sheets A3 at 3 positions, B5–A3, \*Bridge unit AK-740 required when using finisher

DF-7120 Document finisher + AK-740, 1,000 sheets A4 52–300 g/m<sup>2</sup>, A6R–SRA3, Stapling up to 50 sheets A4 or 30 sheets A3 at 3 positions, \*Bridge unit AK-740 required when using finisher

PH-7A/B/C/D for DF-791 and DF-7120, 2-hole/4-hole/Swedish type, 45–300 g/m<sup>2</sup>, A5R–A3

MT-730(B) Mailbox sorter for DF-791, 7 bins x 100 sheets A4, 50 sheets A3/B4, 60–163 g/m<sup>2</sup>

**Storage:** HD-15: HDD 320 GB, HD-16: HDD 1 TB, NK-7120: Numeric keypad, Keyboard Holder 10, UG-33 AC: ThinPrint support, Emulation (IBM Proprinter/EPSON LQ-850/Diablo 630), USB IC Card Reader + Card Authentication Kit (B) AC Support for various authentication keys available. The card holder is standard.

### Optional interface:

IB-37: Wireless Network Interface (USB : 5GHz/2.4GHz)

IB-38: Wireless Network Interface (USB : 2.4GHz)

IB-50: Gigabit-Ethernet board 10 BaseT/100 BaseTX/1,000 BaseT

IB-51: Wireless LAN Interface (802.11b/g/n)

## Document Processing Options



**DP-7170**  
Dual Scan Document Processor  
320-sheet capacity  
w/ multi-feed & staple detect  
100 ipm simplex / 200 ipm duplex



**DP-7160**  
Dual Scan Document Processor  
320-sheet capacity  
w/ multi-feed detection  
100 ipm simplex / 200 ipm duplex



**DP-7150**  
Reversing Auto  
Document Processor  
140-sheet capacity  
80 ipm simplex / 48 ipm duplex



**DP-7140**  
Reversing Auto  
Document Processor  
50-sheet capacity  
50 ipm simplex / 16 ipm duplex

## Document Finishing Options



**PH-7A**  
2/3 Hole Punch Unit for  
the DF-7120 Finisher  
Resides in the Finisher

**DF-7120**  
1,000-sheet Finisher  
Staples up to 50-sheets



**AK-740**  
Attachment Kit required  
for both the DF-7120  
and DF-791 Finishers



**DT-730 (B)**  
**Original Holder**  
Optional platform that holds  
originals prior to copying



**NK-7120**  
**Numeric Keypad**  
Provides additional hard  
key option for the User Interface



**TASKalfa MZ4000i**

## Additional Paper Feeding Options



**MT-730 (B)**  
7-Bin Mailbox Option  
Installed on top of the  
DF-791 Finisher  
Holds 100-sheets/Bin



**DF-791**  
3,000-sheet Finisher  
Staples up to 65-sheets

**PH-7A**  
2/3 Hole Punch Unit  
for the DF-791 Finisher  
Resides in the Finisher



**PF-791**  
Dual 500-sheet  
Paper Tray Option  
A5R-A3



**PF-810**  
Dual 1,500-sheet  
Paper Tray Option  
A4, B5, Letter

**IB-37**  
Wi-Fi 2.4 GHz/5GHz

**HD-16**  
1 TB HDD option

**HD-15** 320 GB Option

**FAX System I2**

**Internet FAX Kit (A)**

**Card Authentication**  
Kit (B)

**IB-50 Gigabit Ethernet**  
Board for Dual NIC

**IB-51 Wireless LAN NIC**  
(extended range)

**PLATEN TYPE E**

**UG-33 Thin Print**

**UG-34 Optional Printer**  
Emulation

**Scan Extension Kit (A)**

**Keyboard Holder 10**

**DT-730 (B) Original Hard**  
Copy Holder



The TASKalfa MZ4000i is a monochrome multifunctional product that is perfect for offices and workgroups with advanced functionality, usability and customisable solutions. TASKalfa MZ4000i provides high productivity and maximum flexibility, whilst ensuring minimum impact on the environment.

**HyPAS™**



Kyocera Document Solutions Partner

KYOCERA Document Solutions Europe B.V.  
Bloemlaan 4, 2132 NP Hoofddorp, The Netherlands  
Tel +31 (0) 20-654-0000 — Fax +31 (0) 20-653-1256



[kyoceradocumentsolutions.eu](https://kyoceradocumentsolutions.eu)

Kyocera Document Solutions does not warrant that any specifications mentioned will be error-free. Specifications are subject to change without notice. Information is correct at time of going to press.  
All other brand and product names may be registered trademarks or trademarks of their respective holders and are hereby acknowledged.  
©2022 KYOCERA Document Solutions Europe, B. V.