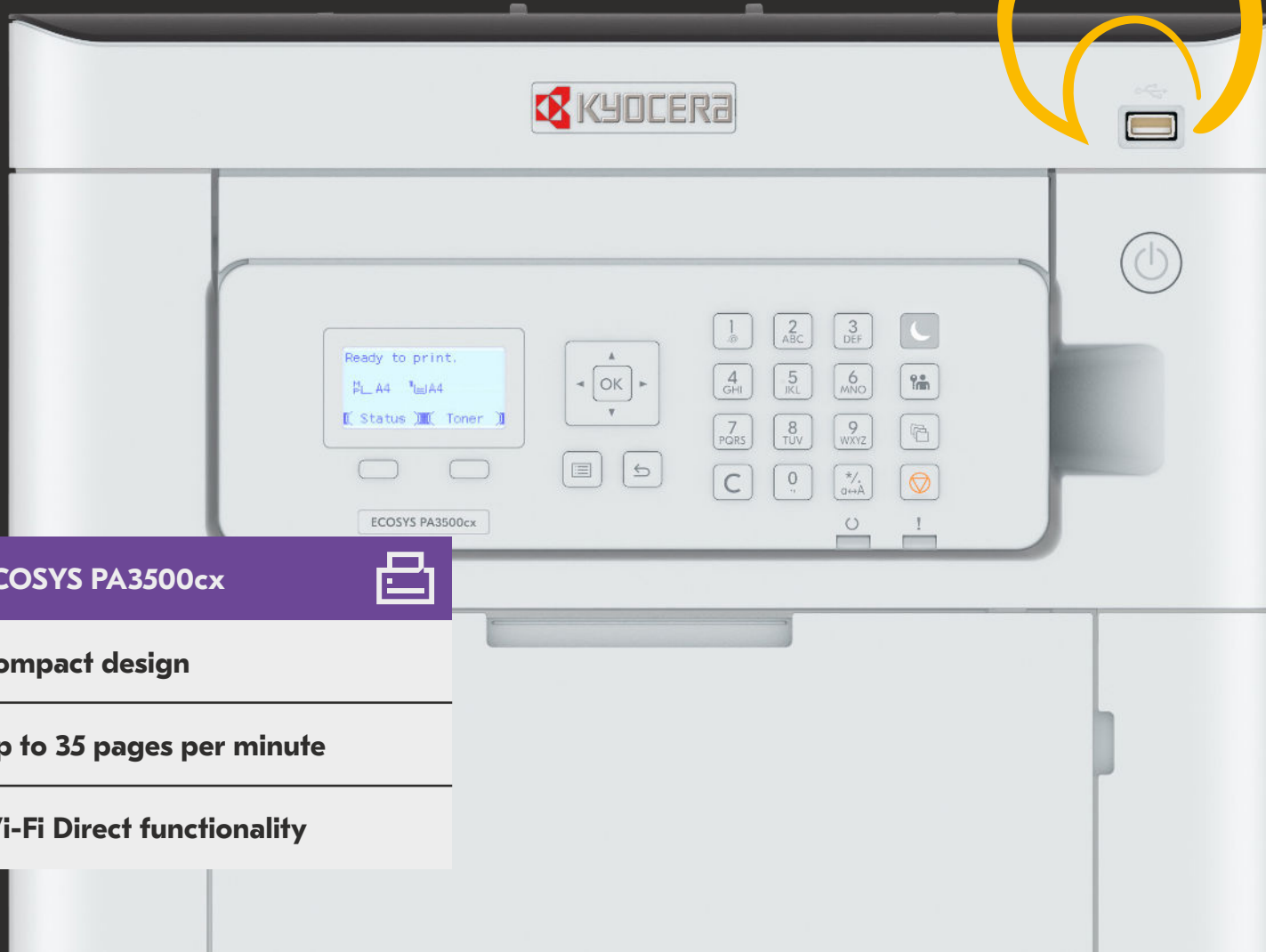


# Your tool for the modern workplace

Boost your business growth and take your productivity to the next level with the ECOSYS PA3500cx printer. Made for medium to large-size work groups, this A4 colour device is integrated with Kyocera long-life components that help to reduce waste and ensure exceptional levels of reliability.



**ECOSYS PA3500cx**



**Compact design**

**Up to 35 pages per minute**

**Wi-Fi Direct functionality**

## Specifications

### GENERAL

KYOCERA ECOSYS Laser Colour Printer

**Operation panel:** 5Line display with back light and numeric keypad

**Type:** Desktop

**Engine speed:** Up to 35 pages A4 per minute;

Duplex print speed: 17.5 pages per minute, A4

**Resolution:** 1200 x 1200 dpi (print),

600 x 600 dpi (scan/copy)

**Recommended Print Volume<sup>1</sup>:** 1,200 images per month

**Maximum Print Volume<sup>1</sup>:** 100,000 images per month

**Maximum Life<sup>1</sup>:** 600,000 images or 5 years

**Warm-up time:** Approx. 23 seconds or less

**Time to first print:** Approx. 5.7 seconds or less

**CPU:** ARM Cortex-A9 Dual core 1.2GHz

**Memory:** Standard 1 GB

**Standard interfaces:** USB 2.0 (Hi-Speed), 2 x USB Host Interface, Gigabit Ethernet (10BASE-T/100BASE-TX /1000BASE-T), optional Wireless LAN (IEEE 802.11b/g/n), 1 x eKUIO slot for optional devices other than FAX, Slot for optional SD Card

**Integrated accounting:** 100 department codes

**Dimensions (W x D x H):** Without packaging:

394 x 531.5 x 392.5 mm (without protrusions);

394 x 533 x 392.5 mm (including protrusions);

With packaging: 702 x 567 x 561 mm

**Weight:** Without packaging:

Approx. 33 kg (with bundled toner)

Approx. 32 kg (without bundled toner)

With packaging: 40 kg

**Power source:** AC 220 ~ 240 V, 50/60 Hz

**Power consumption:**

Printing: 496.4W

Ready mode: 11.8 W

Sleep-mode: 0.4 W (default)

**Noise (sound pressure level: ISO 7779/ISO 9296):**

Operating: 51 dB (LpAm)

Stand-by: 30 dB (LpAm)

**Safety standards:** TÜV/GS, CE

This unit is manufactured according to ISO 9001 quality standard and ISO 14001 environmental standard.

### PAPER HANDLING

All paper capacities quoted are based on paper thickness of max. 0.11 mm. Please use paper recommended by KYOCERA under normal environmental conditions.

**Input capacity:** Multi-purpose tray: 100 sheets (80 g/m<sup>2</sup> equivalent), 110 sheets (64 g/m<sup>2</sup> equivalent.)

60–220 g/m<sup>2</sup>. A4, A5, A6, B5, B6, Letter, Legal, Folio,

Custom (70 x 140 to 216 x 356 mm), Banner paper

up to 1220 mm. Standard universal paper cassette:

550 sheet with 75 g/m<sup>2</sup>, 600 sheet with 64 g/m<sup>2</sup>

60–220 g/m<sup>2</sup>. A4, A5, A6, B5, B6, Letter, Legal,

Folio, Custom (105 x 140 to 216 x 356 mm).

Max. input capacity with options: 2,300 sheets

with 75 g/m<sup>2</sup>, 2,510 sheets with 64 g/m<sup>2</sup>

**Duplex:** Standard duplex unit 60–163 g/m<sup>2</sup>, A4, A5, A6,

B5, Letter, Legal, Custom (140 x 210 mm - 216 x 356 mm).

**Output capacity:** 250 sheets (Equivalent to 80 g/m<sup>2</sup>) face down with paper full sensor

### PRINT FUNCTIONS

**Controller language:** PRESCRIBE

**Emulations:** PCL6 (5c/XL), KPDL3 (PostScript 3 compatible),

PDF, XPS, Open XPS, TIFF, JPEG, URF, PWG Raster, PCLm

**Operating systems:** All current Windows operating systems,

MAC OS X Version 10.9 or higher, Chrome OS, Linux,

as well as other operating systems on request

**Fonts/barcodes:** 93 outline fonts (PCL6, KPDL3), 4 fonts

(Calibri), 4 fonts (Cambria), 1 Bitmap font, 45 types of

one-dimensional barcodes, 1 type of two-dimensional

barcode (PDF417)

**Print features:** PDF Direct Print, Internet printing IPP

1.0, E-mail printing, WSD print, secure printing IPP over

TLS, Local and network authentication, Network data

encryption IPsec, HTTPS, LDAP over TLS, SNMPv3,

SMTP over TLS, POP over TLS, Encrypted PDF Direct

Print, TLS 1.3, Secure Boot, Run-time Integrity Check,

Microsoft Universal Print, Printing for Chrome OS

**Mobile printing support:** KYOCERA Mobile Print app for

iOS and Android, AirPrint, Mopria, Microsoft Universal Print,

Wi-Fi Direct (Opt)

### CONSUMABLES

Average continuous toner yield in accordance with ISO 19798

**TK-5370K:** Black toner 7,000 pages A4

TK-5370Y, TK-5370M, TK-5370C

Yellow, Magenta and Cyan 5,000 pages for A4

Starter toner black 3,500 pages and Yellow,

Magenta and Cyan 2,500 pages A4

### OPTIONS

**PF-5150 Paper feeder:** Max. 550 sheet with 75 g/m<sup>2</sup>, 600 sheet with 64 g/m<sup>2</sup>, 60 - 220 g/m<sup>2</sup>, A5R - Legal, 92.1 x 165.1 (Com6), 114x162 (Youkei2), Max 3 Units

**Memory upgrade:** 1GB/2GB

**Storage Devices for easy document management:**

HD-17 SSD hard disk: 64GB

HD-18 SSD hard disk: 256GB

HD-19 SSD hard disk: 512GB

**Scan Extension Kit (A):** Scan to searchable PDF (embedded OCR) or to MS Office (docx, xlsx, pptx), HD or SD card is needed.

### SECURITY

**UG-33:** ThinPrint support

**UG-35:** TPM (Trusted Platform Module)

**UG-50:** TPM (Trusted Platform Module)

**USB IC Card Reader + Card Authentication Kit (B):**

Support for various authentication keys available.

**Optional interface:**

**IB-37:** Wireless LAN (802.11a/b/g/n/ac) with Wi-Fi Direct

**IB-38:** Wireless LAN (802.11b/g/n) with Wi-Fi Direct

**IB-50:** Gigabit Ethernet 10BASE-T/100BASE-TX/

1000BASE-T

**IB-51:** Wireless LAN Interface (802.11b/g/n)

**Product Library 14:** Installation DVD

### WARRANTY

1-year warranty as standard \*\*. KYOCERA guarantees the drum and developer for 3 years or 200,000 pages (whichever occurs sooner), provided each device is used and cleaned in accordance with the service instructions.

### KYOCERA LIFE

Up to 5-year on-site warranty extensions available for product and options.

### WHAT'S IN THE BOX:

Main unit, initial toner, waste toner box, Quick guide, Safety Guide, Operation panel sheet, power supply cord.

<sup>1</sup>The device is not designed to achieve the specified volumes in continuous operation.

ECOSYS stands for ECOlogy, ECONomy and SYStem printing. With their long-life components, ECOSYS devices are designed to maximise durability and minimise the total cost of ownership with regard to maintenance, administration and consumables. The cartridge-free system means that only the toner has to be replaced regularly. The modular design concept allows you to add workflowenhancing functions as required. Integrated system software provides long-term crossnetwork compatibility. KYOCERA's long-life components cost you and the environment less.



KYOCERA Document Solutions Europe B.V.  
Bloemlaan 4, 2132 NP Hoofddorp, The Netherlands  
Tel +31 (0) 20-654-0000 – Fax +31 (0) 20-653-1256  
www.kyoceradocumentsolutions.eu – info@deu.kyocera.com



\* KYOCERA Document Solutions does not warrant that any specifications mentioned will be error-free. Specifications are subject to change without notice. Information is correct at time of going to press. All other brand and product names may be registered trademarks or trademarks of their respective holders and are hereby acknowledged.  
\*\* Depending on the country